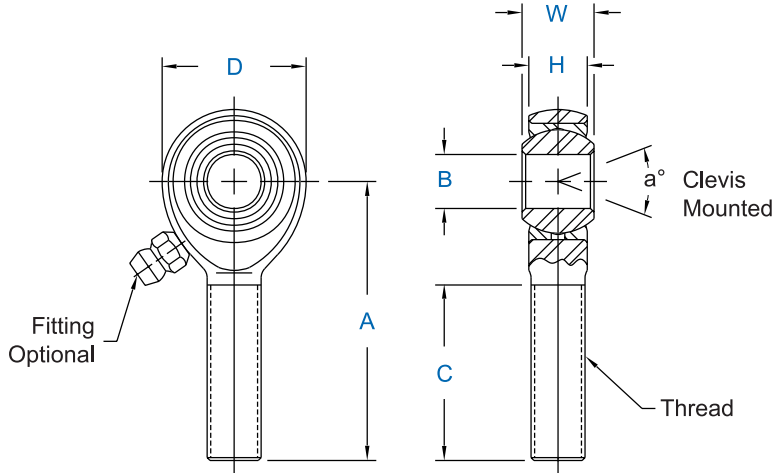




**AM & AB Series Male Rod Ends**  
High Strength Alloy - Precision (PTFE Liners Available)



Specifications
<b>Body</b> - Alloy Steel, heat treated, protective coated for corrosion resistance.
<b>Race</b> - Alloy steel, heat treated, protective coated for corrosion resistance (Carbon steel with PTFE liners).
<b>Ball</b> - Alloy steel, heat treated, hard chrome plated.
Notes
Units in this series will be magnafluxed on special request only.

Rod End No.		DIMENSIONS IN INCHES								a° Misalign. Angle	Ultimate Radial Static Load Capacity Lbs.	Approx. Brg. Wt. Lbs.	
Right Hand	Left Hand	B + .0015 - .0005	W + .000 - .005	H ± .005	A ± .010	D ± .010	Ball Dia. Ref.	C + .062 - .031	Thread UNF-3A				
	AM-3	AB-3	.1900	.312	.250	1.250	.625	.437	.750	10-32	13	2,851	.028
	AM-4	AB-4	.2500	.375	.281	1.562	.750	.500	1.000	1/4-28	16	5,260	.043
	AM-5	AB-5	.3125	.437	.344	1.875	.875	.625	1.250	5/16-24	14	7,639	.072
	AM-6	AB-6	.3750	.500	.406	1.938	1.000	.719	1.250	3/8-24	12	9,544	.112
	AM-7	AB-7	.4375	.562	.437	2.125	1.125	.812	1.375	7/16-20	14	10,285	.160
	AM-8	AB-8	.5000	.625	.500	2.438	1.312	.937	1.500	1/2-20	12	16,238	.249
	AM-10	AB-10	.6250	.750	.562	2.625	1.500	1.125	1.625	5/8-18	16	17,955	.382
	AM-12	AB-12	.7500	.875	.687	2.875	1.750	1.312	1.750	3/4-16	14	28,081	.602
	AM-12-20	AB-12-20	.7500	.875	.687	2.875	1.750	1.312	1.750	7/8-14	14	28,081	.720
	AM-14	AB-14	.8750	.875	.765	3.375	2.000	1.375	2.000	7/8-14	7	45,051	.906
*	AM-14-1	AB-14-1	.8750	.875	.687	3.375	2.000	1.312	1.875	7/8-14	12	55,692	.906
1	AM-16	AB-16	1.0000	1.375	1.000	4.125	2.750	1.875	2.125	1 1/4-12	17	76,200	2.406
1	AM-16-1	AB-16-1	1.0000	1.375	1.000	4.125	2.750	1.875	2.125	1-14 <sup>3</sup>	17	76,200	2.127
1	AM-16-2	AB-16-2	1.0000	1.375	1.000	4.125	2.750	1.875	2.125	1-12	17	76,200	2.127

Rod End No.		DIMENSIONS IN MILLIMETERS								a° Misalign. Angle	Ultimate Radial Static Load Capacity Newtons	Approx. Brg. Wt. Grams	
Right Hand	Left Hand	B + .038 - .013	W + .00 - .13	H ± .13	A ± .25	D ± .25	Ball Dia. Ref.	C + 1.57 - .79	Thread UNF-3A				
	AM-3	AB-3	4.826	7.92	6.35	31.75	15.88	11.10	19.05	10-32	13	12,679	13
	AM-4	AB-4	6.350	9.53	7.14	39.67	19.05	12.70	25.40	1/4-28	16	23,397	20
	AM-5	AB-5	7.938	11.10	8.74	47.63	22.23	15.88	31.75	5/16-24	14	33,978	33
	AM-6	AB-6	9.525	12.70	10.31	49.23	25.40	18.26	31.75	3/8-24	12	42,450	51
	AM-7	AB-7	11.113	14.27	11.10	53.98	28.58	20.62	34.93	7/16-20	14	45,745	73
	AM-8	AB-8	12.700	15.88	12.70	61.93	33.32	23.80	38.10	1/2-20	12	72,231	113
	AM-10	AB-10	15.875	19.05	14.27	66.68	38.10	28.58	41.28	5/8-18	16	79,861	173
	AM-12	AB-12	19.050	22.23	17.45	73.03	44.45	33.32	44.45	3/4-16	14	124,910	273
	AM-12-20	AB-12-20	19.050	22.23	17.45	73.03	44.45	33.32	44.45	7/8-14	14	124,910	273
	AM-14	AB-14	22.225	22.23	19.43	85.73	50.80	34.93	50.80	7/8-14	7	200,387	411
*	AM-14-1	AB-14-1	22.225	22.23	17.45	85.73	50.80	33.32	47.63	7/8-14	12	247,718	411
2	AM-16	AB-16	25.400	34.93	25.40	104.78	69.85	47.63	53.98	1 1/4-12	17	338,937	1,091
2	AM-16-1	AB-16-1	25.400	34.93	25.40	104.78	69.85	47.63	53.98	1-14 <sup>3</sup>	17	338,937	965
2	AM-16-2	AB-16-2	25.400	34.93	25.40	104.78	69.85	47.63	53.98	1-12	17	338,937	965

1 Tolerance variation: "D" ± .020, "A" ± .020, "B" + .0035, - .0005, "H" ± .010 Check for availability.  
 2 Tolerance variation: "D" ± .51, "A" ± .51, "B" + .089, - .013, "H" ± .25 Check for availability.  
 3 Threads 1-14 UNS.  
 \* Check for availability.

Units are supplied without grease fittings. When a grease fitting is required, specify by adding suffix as designated.

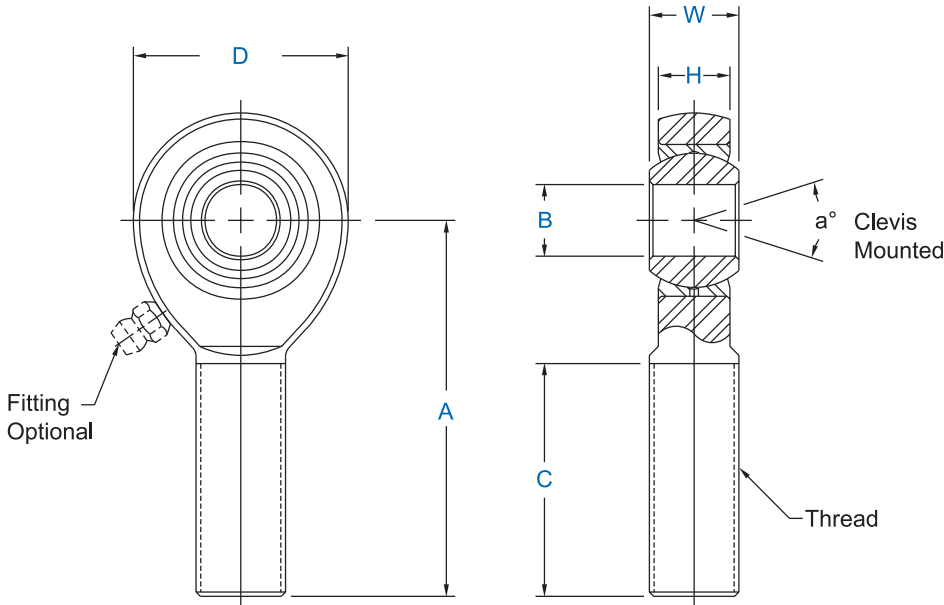
Z Zerk type fitting Ex: AM-6Z  
 F Flush type fitting Ex: AM-6F  
 T PTFE liner Ex: AM-6T

Load ratings apply only to rod ends without grease fittings. For load ratings with fittings, please consult our engineering department.



## XM & XB Series Male Rod Ends

Extra Strength - Heavy Duty Shank (PTFE Liners Available)



Specifications
<b>Body</b> - Carbon steel protective coated for corrosion resistance.
<b>Race</b> - Alloy steel, heat treated protective coated for corrosion resistance. (Carbon steel with PTFE liners.)
<b>Ball</b> - Alloy steel, heat treated, hard chrome plated.
Notes
All sizes available with studs upon request. All sizes sold solid shank type.

Rod End No.		DIMENSIONS IN INCHES								a° Misalign. Angle	Ultimate Radial Static Load Capacity Lbs.	Approx. Brg. Wt. Lbs.
Right Hand	Left Hand	B + .0015 - .0005	W + .000 - .005	H ± .005	A ± .015	D ± .010	Ball Dia. Ref.	C + .062 - .031	Thread UNF-3A			
XM-3	XB-3	.1900	.312	.250	1.562	.750	.437	1.000	1/4-28	10	2,158	.043
XM-4	XB-4	.2500	.375	.281	1.875	.875	.500	1.250	5/16-24	13	3,467	.072
XM-5	XB-5	.3125	.437	.344	1.938	1.000	.625	1.250	3/8-24	12	5,323	.112
XM-6	XB-6	.3750	.500	.406	2.125	1.125	.719	1.375	7/16-20	10	7,180	.160
XM-7	XB-7	.4375	.562	.437	2.438	1.312	.812	1.500	1/2-20	12	9,620	.249
XM-8	XB-8	.5000	.625	.500	2.625	1.500	.937	1.625	5/8-18	10	12,807	.382
XM-10	XB-10	.6250	.750	.562	2.875	1.750	1.125	1.750	3/4-16	13	16,565	.602
XM-12	XB-12	.7500	.875	.687	3.375	2.000	1.312	1.875	7/8-14	12	22,803	.918
XM-12-1	XB-12-1	.7500	.875	.687	3.375	2.000	1.312	1.875	3/4-16	12	22,803	.918
XM-14-1	XB-14-1	.8750	.875	.687	3.375	2.000	1.312	1.875	7/8-14	12	22,803	.918

Rod End No.		DIMENSIONS IN MILLIMETERS								a° Misalign. Angle	Ultimate Radial Static Load Capacity Newtons	Approx. Brg. Wt. Grams
Right Hand	Left Hand	B + .038 - .013	W + .00 - .13	H ± .13	A ± .38	D ± .25	Ball Dia. Ref.	C + 1.57 - .79	Thread UNF-3A			
XM-3	XB-3	4.826	7.92	6.35	39.67	19.05	11.10	25.40	1/4-28	10	9,600	20
XM-4	XB-4	6.350	9.53	7.14	47.63	22.23	12.70	31.75	5/16-24	13	15,425	33
XM-5	XB-5	7.938	11.10	8.74	49.23	25.40	15.88	31.75	3/8-24	12	23,682	51
XM-6	XB-6	9.525	12.70	10.31	53.98	28.58	18.26	34.93	7/16-20	10	31,938	73
XM-7	XB-7	11.113	14.27	11.10	61.93	33.32	20.62	38.10	1/2-20	12	42,794	113
XM-8	XB-8	12.700	15.88	12.70	66.68	38.10	23.80	41.28	5/8-18	10	56,963	173
XM-10	XB-10	15.875	19.05	14.27	73.02	44.45	28.58	44.45	3/4-16	13	73,683	273
XM-12	XB-12	19.050	22.23	17.45	85.73	50.80	33.32	47.63	7/8-14	12	101,424	427
XM-12-1	XB-12-1	19.050	22.23	17.45	85.73	50.80	33.32	47.63	3/4-16	12	101,424	427
XM-14-1	XB-14-1	22.225	22.23	17.45	85.73	50.80	33.32	47.63	7/8-14	12	101,424	427

Load ratings apply only to rod ends without grease fittings. For load ratings with fittings, please consult our engineering department.

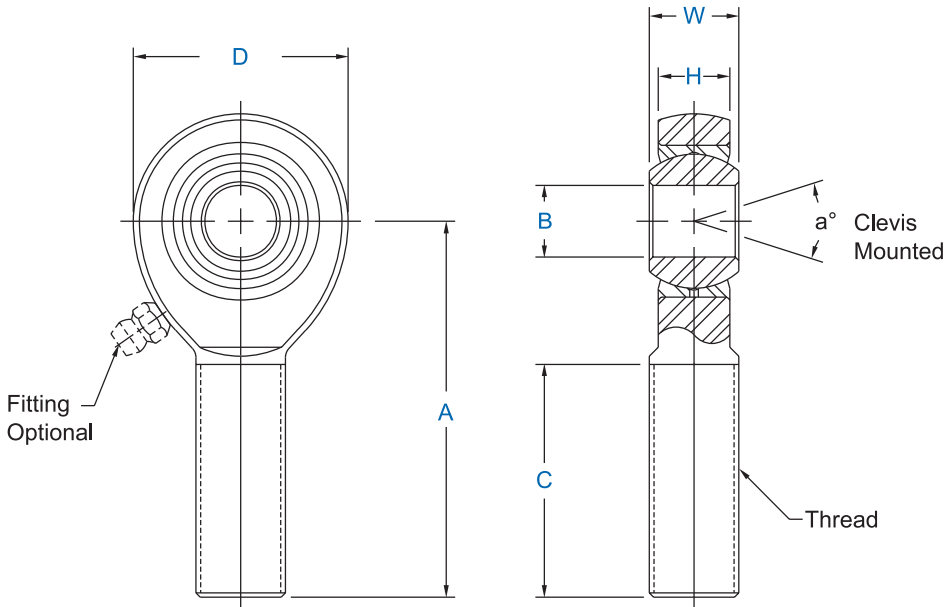
Units are supplied without grease fittings. When a grease fitting is required, specify by adding suffix as designated.

- Z Zerk type fitting Ex: XM-6Z
- F Flush type fitting Ex: XM-6F
- T PTFE Liner Ex: XM-6T



## XAM & XAB Series Male Rod Ends

High Strength Alloy - Heavy Duty Shank (PTFE Liners Available)



Specifications
<b>Body</b> - Alloy steel, heat treated, protective coated for corrosion resistance.
<b>Race</b> - Alloy steel, heat treated protective coated for corrosion resistance. (Carbon steel with PTFE liners.)
<b>Ball</b> - Alloy steel, heat treated, hard chrome plated.
Notes
All sizes available with studs upon request. All sizes sold solid shank type.

Rod End No.		DIMENSIONS IN INCHES								a° Misalign. Angle	Ultimate Radial Static Load Capacity Lbs.	Approx. Brg. Wt. Lbs.
Right Hand	Left Hand	B + .0015 - .0005	W + .000 - .0005	H ± .005	A ± .015	D ± .010	Ball Dia. Ref.	C + .062 - .031	Thread UNF-3A			
XAM-3	XAB-3	.1900	.312	.250	1.562	.750	.437	1.000	1/4-28	10	5,260	.043
XAM-4	XAB-4	.2500	.375	.281	1.875	.875	.500	1.250	5/16-24	13	8,452	.072
XAM-5	XAB-5	.3125	.437	.344	1.938	1.000	.625	1.250	3/8-24	12	12,978	.112
XAM-6	XAB-6	.3750	.500	.406	2.125	1.125	.719	1.375	7/16-20	10	17,508	.160
XAM-7	XAB-7	.4375	.562	.437	2.438	1.312	.812	1.500	1/2-20	12	23,452	.249
XAM-8	XAB-8	.5000	.625	.500	2.625	1.500	.937	1.625	5/8-18	10	31,390	.382
XAM-10	XAB-10	.6250	.750	.562	2.875	1.750	1.125	1.750	3/4-16	13	40,572	.602
XAM-12	XAB-12	.7500	.875	.687	3.375	2.000	1.312	1.875	7/8-14	12	55,692	.918
1	XAM-16	XAB-16	1.000	1.375	1.000	4.125	2.750	1.875	1 1/4-12	17	76,200	2.406
*	2	XAM-20-1	XAB-20-1	1.250	1.093	.937	4.125	2.750	1 1/2-12	7	79,728	2.625
*	2	XAM-24-1	XAB-24-1	1.500	1.312	1.125	5.375	3.500	1 3/4-12	6.5	138,826	6.062

Rod End No.		DIMENSIONS IN MILLIMETERS								a° Misalign. Angle	Ultimate Radial Static Load Capacity Newtons	Approx. Brg. Wt. Grams
Right Hand	Left Hand	B + .038 - .013	W + .00 - .13	H ± .13	A ± .38	D ± .25	Ball Dia. Ref.	C + 1.57 - .79	Thread UNF-3A			
XAM-3	XAB-3	4.826	7.92	6.35	39.67	19.05	11.10	25.40	1/4-28	10	23,397	20
XAM-4	XAB-4	6.350	9.53	7.14	47.63	22.23	12.70	31.75	5/16-24	13	37,596	33
XAM-5	XAB-5	7.938	11.10	8.74	49.23	25.40	15.88	31.75	3/8-24	12	57,728	51
XAM-6	XAB-6	9.525	12.70	10.31	53.98	28.58	18.26	34.93	7/16-20	10	77,880	73
XAM-7	XAB-7	11.113	14.27	11.10	61.93	33.32	20.62	38.10	1/2-20	12	104,317	113
XAM-8	XAB-8	12.700	15.88	12.70	66.68	38.10	23.80	41.28	5/8-18	10	139,628	173
XAM-10	XAB-10	15.875	19.05	14.27	73.02	44.45	28.58	44.45	3/4-16	13	180,461	273
XAM-12	XAB-12	19.050	22.23	17.45	85.73	50.80	33.32	47.63	7/8-14	12	247,721	427
3	XAM-16	XAB-16	25.400	34.93	25.40	104.78	68.85	47.63	1 1/4-12	17	338,937	1,091
*	4	XAM-20-1	XAB-20-1	31.750	27.76	23.80	104.78	68.85	1 1/2-12	7	354,636	1,191
*	4	XAM-24-1	XAB-24-1	38.100	33.32	28.58	136.53	88.90	1 3/4-12	6.5	617,497	2,750

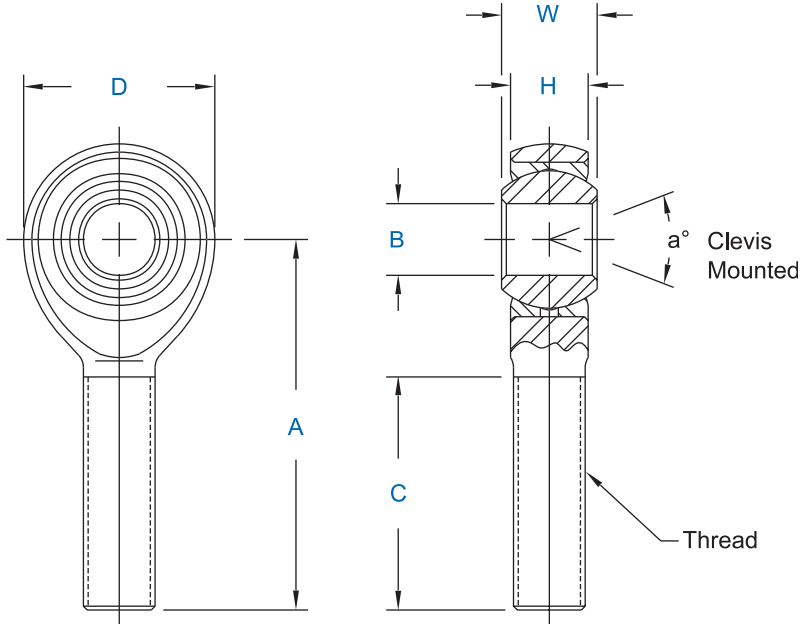
- 1 Tolerance variation: "B" +.0035, -.0005; "A" ±.020; "D" ±.020; "H" ±.010 Same as AM-16.
  - 2 Tolerance variation: "B" +.0000, -.0005; "A" ±.020; "D" ±.020; "H" ±.010 Check for availability.
  - 3 Tolerance variation: "B" +.089, -.013; "A" ±.51; "D" ±.51; "H" ±.25 Check for availability.
  - 4 Tolerance variation: "B" +.000, -.013; "A" ±.51; "D" ±.51; "H" ±.25 Check for availability.
- \* Consult factory for PTFE lined part dimensions.

Units are supplied without grease fittings. When a grease fitting is required, specify by adding suffix as designated.  
 Z Zerk type fitting Ex: XAM-6Z  
 F Flush type fitting Ex: XAM-6F  
 T PTFE Liner Ex: XAM-6T  
 Load ratings apply only to rod ends without grease fittings. For load ratings with fittings, please consult our engineering department.



## RAM, RAB, RXAM, RXAB Series Male Rod Ends

High Strength Alloy (PTFE Liners Available)



Specifications	
<b>Body</b>	- Alloy steel, heat treated, nickel or chrome plated.
<b>Race</b>	- Alloy steel, heat treated, nickel plated.
<b>Ball</b>	- Alloy steel, heat treated, hard chrome plated.

### RAM - Heavy Duty

Rod End No.		DIMENSIONS IN INCHES								a° Misalign. Angle	Ultimate Radial Static Load Capacity Lbs.	Approx. Brg. Wt. Lbs.
Right Hand	Left Hand	B + .0015 - .0005	W + .000 - .005	H ± .005	A ± .010	D + .000 - .020	Ball Dia. Ref.	C + .062 - .031	Thread UNJF-3A			
RAM-3	RAB-3	.1900	.312	.250	1.250	.625	.437	.750	10-32 <sup>1</sup>	13	2,851	.028
RAM-4	RAB-4	.2500	.375	.281	1.562	.750	.500	1.000	1/4-28	16	5,260	.043
RAM-5	RAB-5	.3125	.437	.344	1.875	.875	.625	1.187	5/16-24	14	7,125	.072
RAM-6	RAB-6	.3750	.500	.406	1.938	1.000	.719	1.187	3/8-24	12	8,939	.112
RAM-7	RAB-7	.4375	.562	.437	2.125	1.125	.812	1.312	7/16-20	14	9,653	.160
RAM-8	RAB-8	.5000	.625	.500	2.438	1.312	.937	1.437	1/2-20	12	15,500	.249
RAM-10	RAB-10	.6250	.750	.562	2.625	1.500	1.125	1.562	5/8-18	16	17,148	.382
* RAM-10-12	RAB-10-12	.6250	.875	.687	2.875	1.750	1.312	1.687	3/4-16	14	27,021	.602
RAM-12	RAB-12	.7500	.875	.687	2.875	1.750	1.312	1.687	3/4-16	14	27,021	.602

### RXAM - Extra Heavy Duty

Rod End No.		DIMENSIONS IN INCHES								a° Misalign. Angle	Ultimate Radial Static Load Capacity Lbs.	Approx. Brg. Wt. Lbs.
Right Hand	Left Hand	B + .0015 - .0005	W + .000 - .005	H ± .005	A ± .010	D + .000 - .020	Ball Dia. Ref.	C + .062 - .031	Thread UNJF-3A			
RXAM-3	RXAB-3	.1900	.312	.250	1.562	.750	.437	1.000	1/4-28	10	5,260	.043
RXAM-4	RXAB-4	.2500	.375	.281	1.875	.875	.500	1.187	5/16-24	13	8,452	.072
RXAM-5	RXAB-5	.3125	.437	.344	1.938	1.000	.625	1.187	3/8-24	12	12,978	.112
RXAM-6	RXAB-6	.3750	.500	.406	2.125	1.125	.719	1.312	7/16-20	10	17,508	.160
RXAM-7	RXAB-7	.4375	.562	.437	2.438	1.312	.812	1.437	1/2-20	12	22,760	.249
RXAM-8	RXAB-8	.5000	.625	.500	2.625	1.500	.937	1.562	5/8-18	10	30,579	.382
RXAM-10	RXAB-10	.6250	.750	.562	2.875	1.750	1.125	1.687	3/4-16	13	39,674	.602

\* Check for availability  
1 Threads UNF-3A

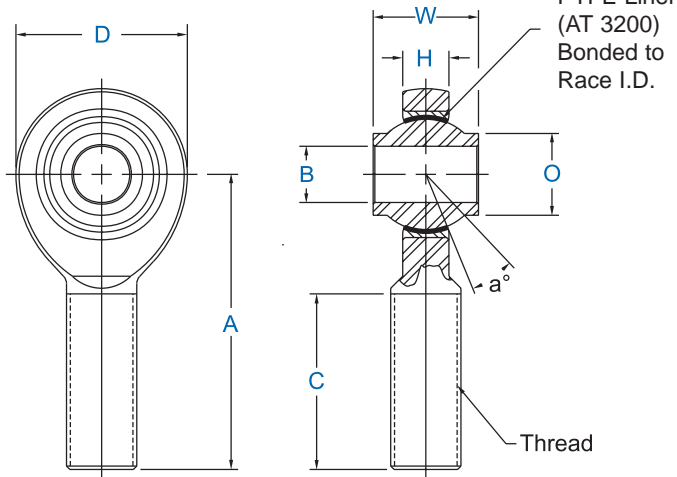
PTFE Liners use suffix T Ex: RAM-10T



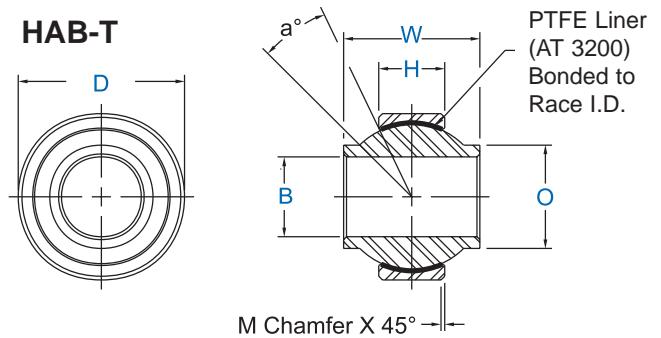
## High Misalignment Series Male Rod Ends & Spherical Bearings

Specifications
<b>Body</b> - 4340 steel, heat treated, protective coated for corrosion resistance.
<b>Race</b> - 4130 steel, heat treated, protective coated for corrosion resistance.
<b>Ball</b> - 52100 steel (AMS 7440), heat treated, hard chrome plated.
<b>PTFE liner</b> - (AT 3200) Permanently bonded to race inside diameter. Qualified to SAE-AS1820 (formerly MIL-B-81820).

### HXAM-T



### HAB-T



### HXAM-T

Rod End No.		DIMENSIONS IN INCHES										a° Misalign. Angle	Ultimate Radial Static Load Capacity Lbs.	Approx. Brg. Wt. Lbs.
Right Hand	Left Hand	B +.0000 -.0005	W +.000 -.005	H ±.005	A ±.010	D ±.010	Ball Dia. Ref.	C ±.031	Thread UNJF-3A	O Shoulder Dia.				
HXAM-4T	HXAB-4T	.2500	.593	.265	1.938	1.025	.593	1.187	3/8-24	.390	23	10,789	.12	
HXAM-5T	HXAB-5T	.3125	.813	.355	2.125	1.150	.781	1.281	7/16-20	.512	22	11,781	.16	
HXAM-6T	HXAB-6T	.3750	.813	.355	2.125	1.150	.781	1.281	7/16-20	.512	22	11,781	.15	
HXAM-7T	HXAB-7T	.4375	.875	.355	2.438	1.337	.875	1.468	1/2-20	.618	21	17,105	.24	
HXAM-8T	HXAB-8T	.5000	.937	.411	2.625	1.525	1.000	1.562	5/8-18	.730	19	23,720	.39	
HXAM-10T	HXAB-10T	.6250	1.200	.577	2.875	1.775	1.250	1.687	3/4-16	.856	19	32,067	.60	
HXAM-12T	HXAB-12T	.7500	1.280	.630	3.375	2.025	1.375	2.000	7/8-14	.970	18	38,660	.89	

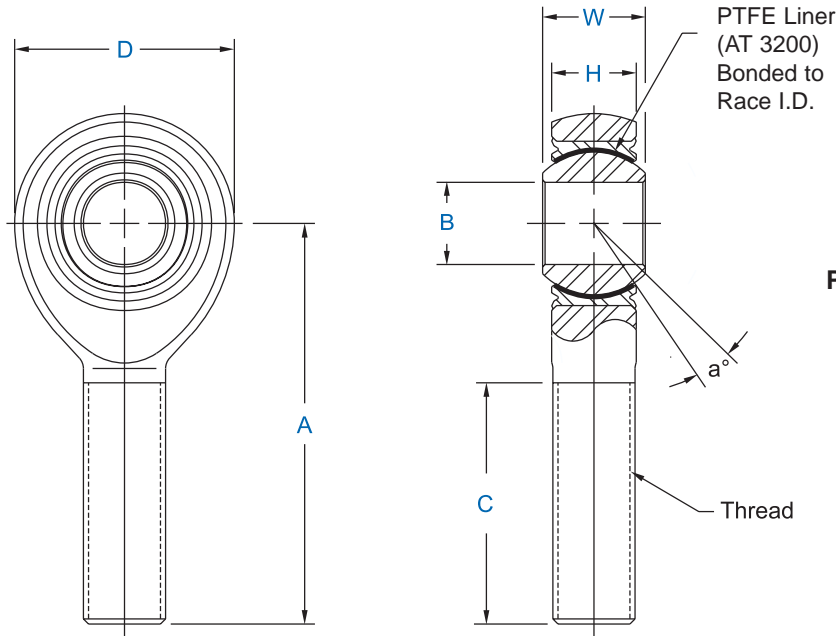
### HAB-T

Bearing No.	DIMENSIONS IN INCHES								a° Misalign. Angle	Ultimate Radial Static Load Capacity Lbs.	Approx. Brg. Wt. Lbs.
Plain Series	B +.0000 -.0005	D +.0000 -.0005	W +.000 -.005	H ±.005	M Ref.	O Ref.	Ball Dia. Ref.				
HAB-4T	.2500	.7400	.593	.255	.020	.390	.593	24	7,560	.036	
HAB-5T	.3125	.9060	.813	.345	.030	.512	.781	23	16,975	.078	
HAB-6T	.3750	.9060	.813	.345	.030	.512	.781	23	16,975	.070	
HAB-7T	.4375	1.0000	.875	.345	.030	.618	.875	22	19,018	.091	
HAB-8T	.5000	1.1250	.937	.401	.030	.730	1.000	20	25,263	.132	
HAB-10T	.6250	1.3750	1.200	.567	.030	.856	1.250	20	44,651	.254	
HAB-12T	.7500	1.5625	1.280	.620	.035	.970	1.375	18	53,707	.332	
HAB-14T	.8750	1.7500	1.400	.630	.039	1.140	1.531	18	72,424	.436	

For Staking Groove add suffix G as required Ex: HAB-6TG. Check for availability.



**Performance Racing Series**  
**PRM-T & PRXM-T Series Male Rod Ends - PTFE Lined**



PRM-T

PRXM-T

Specifications	
<b>Body</b>	- 4340 steel, heat treated, protective coated for corrosion resistance.
<b>Race</b>	- Stainless steel (17-4 PH per AMS 5643), heat treated.
<b>Ball</b>	- 52100 steel (AMS 7440), heat treated, hard chrome plated.
<b>PTFE Liner</b>	- (AT 3200) Permanently bonded to race inside diameter. Qualified to SAE-AS1820 (formerly MIL-B-81820).

**PRM-T - Performance Racing Series**

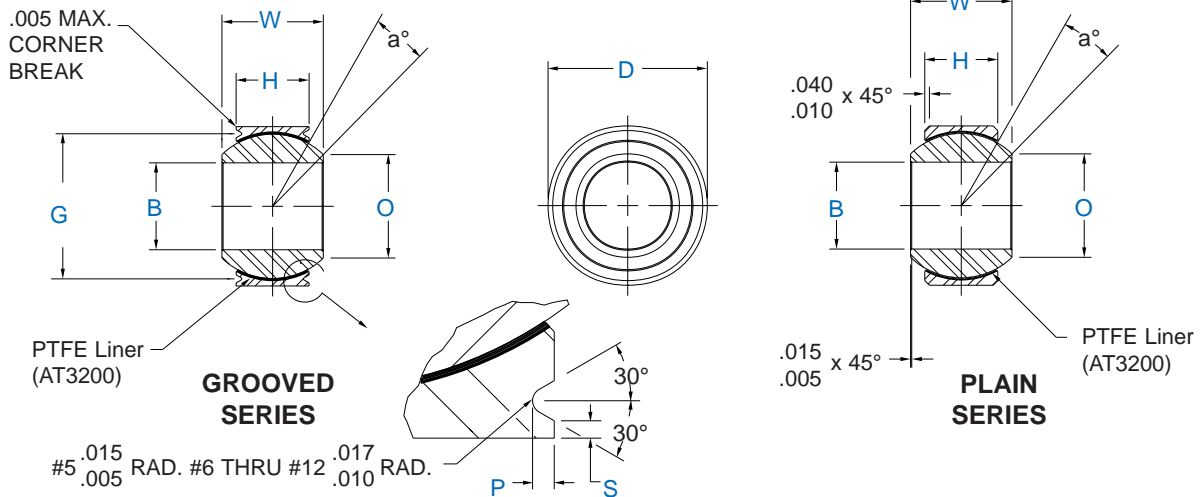
Rod End No.		DIMENSIONS IN INCHES								a° Misalign. Angle	Ultimate Radial Static Load Capacity Lbs.	No Load Pivotal Breakaway Torque In-Lbs.
Right Hand	Left Hand	B +.0000 -.0005	W +.000 -.005	H ± .005	A ± .010	D ± .010	Ball Dia. Ref.	C ± .031	Thread UNJF-3A			
PRM-5T	PRB-5T	.3125	.437	.327	1.875	.900	.593	1.187	5/16-24	14	8,300	2 - 10
PRM-6T	PRB-6T	.3750	.500	.416	1.938	1.025	.687	1.187	3/8-24	8	10,946	2 - 10
PRM-7T	PRB-7T	.4375	.562	.452	2.125	1.150	.781	1.281	7/16-20	10	14,049	5 - 15
PRM-8T	PRB-8T	.5000	.625	.515	2.438	1.337	.875	1.468	1/2-20	9	23,310	5 - 15
PRM-10T	PRB-10T	.6250	.750	.577	2.625	1.525	1.062	1.562	5/8-18	12	25,909	5 - 15
PRM-12T	PRB-12T	.7500	.875	.640	2.875	1.775	1.250	1.687	3/4-16	13	34,319	5 - 15

**PRXM-T - Performance Racing - Heavy Duty Shank Series**

Rod End No.		DIMENSIONS IN INCHES								a° Misalign. Angle	Ultimate Radial Static Load Capacity Lbs.	No Load Pivotal Breakaway Torque In-Lbs.
Right Hand	Left Hand	B +.0000 -.0005	W +.000 -.005	H ± .005	A ± .010	D ± .010	Ball Dia. Ref.	C ± .031	Thread UNJF-3A			
PRXM-4T	PRXB-4T	.2500	.375	.337	1.562	.806	.531	.968	5/16-24	6	7,544	2 - 10
PRXM-5T	PRXB-5T	.3125	.437	.327	1.875	.900	.593	1.187	3/8-24	14	9,135	2 - 10
PRXM-6T	PRXB-6T	.3750	.500	.416	1.938	1.025	.687	1.187	7/16-20	8	10,946	2 - 10
PRXM-7T	PRXB-7T	.4375	.562	.452	2.125	1.150	.781	1.281	1/2-20	10	14,049	5 - 15
PRXM-8T	PRXB-8T	.5000	.625	.515	2.438	1.337	.875	1.468	5/8-18	9	23,310	5 - 15
PRXM-10T	PRXB-10T	.6250	.750	.577	2.625	1.525	1.062	1.562	3/4-16	12	25,909	5 - 15



**Performance Racing Series**  
**PNB-TG & PNB-T Series, PWB-TG & PWB-T Series**  
**Spherical Bearings - PTFE Lined**



Specifications		
<b>BALL</b> - Alloy steel, heat treated, hard chrome plated.	<b>RACE</b> - Stainless Steel (17-4PH per AMS 5643), heat treated PTFE Lined.	<b>PTFE LINER</b> - (AT 3200) Permanently bonded to race inside diameter. Qualified to SAE-AS81820 (formerly MIL-B-81820).

**PNB-TG & PNB-T - Performance Racing Spherical Narrow Series**

Rod End No.		DIMENSIONS IN INCHES									a°	Static Limit Load		No Load Pivotal Breakaway Torque in-Lbs.
Grooved	Plain	B	D	W	H	O	P	S	G	Ball Dia. Ref.		Radial Lbs.	Axial Lbs.	
PNB-5TG	PNB-5T	.3125	.7500	.375	.281	.419	.035	.020	.650	.562	10	8,750	700	1 - 8
PNB-6TG	PNB-6T	.3750	.8125	.406	.312	.475	.035	.020	.712	.625	9	10,540	1,100	1 - 8
PNB-7TG	PNB-7T	.4375	.9062	.437	.343	.530	.035	.020	.806	.687	8	13,200	1,400	3 - 12
PNB-8TG	PNB-8T	.5000	1.0000	.500	.390	.600	.055	.020	.876	.781	8	17,900	2,100	3 - 12
PNB-9TG	PNB-9T	.5625	1.0937	.562	.437	.670	.060	.020	.972	.875	8	23,200	3,680	3 - 12
PNB-10TG	PNB-10T	.6250	1.1875	.625	.500	.739	.055	.020	1.063	.968	8	30,500	4,720	3 - 12
PNB-12TG	PNB-12T	.7500	1.4375	.750	.593	.920	.055	.020	1.313	1.187	8	46,400	6,750	3 - 12

**PWB-TG & PWB-T - Performance Racing Spherical Wide Series**

Rod End No.		DIMENSIONS IN INCHES									a°	Static Limit Load		No Load Pivotal Breakaway Torque in-Lbs.
Grooved	Plain	B	D	W	H	O	P	S	G	Ball Dia. Ref.		Radial Lbs.	Axial Lbs.	
PWB-5TG	PWB-5T	.3125	.6875	.437	.317	.401	.025	.010	.625	.593	14	9,400	1,640	1 - 8
PWB-6TG	PWB-6T	.3750	.8125	.500	.406	.466	.035	.020	.712	.687	8	13,700	2,630	1 - 8
PWB-7TG	PWB-7T	.4375	.9375	.562	.442	.537	.035	.020	.837	.781	10	20,700	3,650	3 - 12
PWB-8TG	PWB-8T	.5000	1.0000	.625	.505	.607	.035	.020	.900	.875	9	21,400	4,970	3 - 12
PWB-9TG	PWB-9T	.5625	1.1250	.687	.536	.721	.040	.020	1.027	1.000	10	26,600	5,370	3 - 12
PWB-10TG	PWB-10T	.6250	1.1875	.750	.567	.747	.035	.020	1.087	1.062	12	29,000	6,130	3 - 12
PWB-12TG	PWB-12T	.7500	1.3750	.875	.630	.887	.055	.020	1.251	1.250	13	37,000	7,730	3 - 12

\* Check for availability