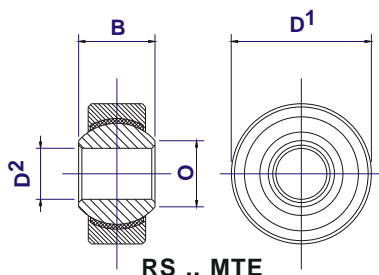


RODOBAL

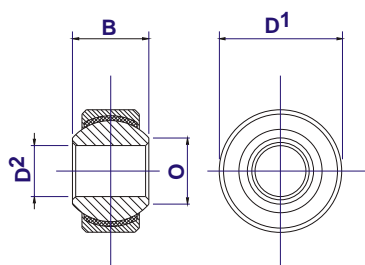
SNODI SFERICI - SPHERICAL BEARINGS - ROTULES

MOTORSPORT

SERIE RS..MTE
RG..MTE



RS .. MTE



RG .. MTE

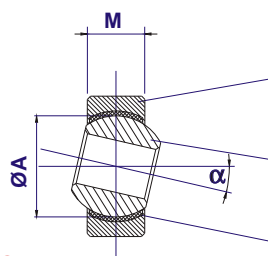
MOTORSPORT

SERIE RS..MTE
RG..MTE

**GIOCO PRECARICATO
PRELOADED FIT
JEU PRECHARGE**

MOTORSPORT

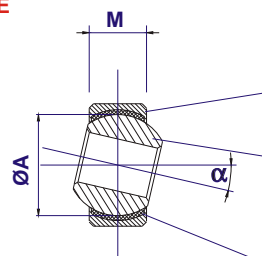
SERIE RS..MTE
RG..MTE



ACCIAIO 45S20
STEEL ZINC-COATED
ACIER

ACCIAIO 100Cr6
STEEL HARDENED
ACIER CHROME PLATED

INSERTO ANTIFRIZIONE
ANTI-FRICTION LINER
COUCHE ANTIFRICTION



ACCIAIO INOX
STEEL AISI 316 Ti
ACIER

ACCIAIO 100Cr6
STEEL HARDENED
ACIER CHROME PLATED

INSERTO ANTIFRIZIONE
ANTI-FRICTION LINER
COUCHE ANTIFRICTION

TIPO TYPE	TIPO TYPE	D ²	D ¹	B	M	O	ØA	STATIC MAX. Co-daN RADIAL	COPPIA DISTACCO BREAKAWAY TORQUE N/dm	°	PESO WEIGHT POIDS
RS 8	MTE	8	22	12	9	10,4	15,875	2780	1 - 10	14°	23 g
RS 10	MTE	10	26	14	10,5	12,9	19,050	3900	2 - 14	13°	38 g
RS 12	MTE	12	30	16	12	15,4	22,225	5300	6 - 18	13°	58 g
RS 14	MTE	14	34	19	13,5	16,8	25,400	6980	6 - 20	16°	83 g
RS 16	MTE	16	38	21	15	19,3	28,575	8780	8 - 22	15°	115 g
RS 18	MTE	18	42	23	16,5	21,8	31,750	10630	8 - 22	15°	150 g
RS 20	MTE	20	46	25	18	24,3	34,925	13020	8 - 25	14°	200 g
RG 8	MTE.19	8	19	12	9	10,4	15,875	2780	1 - 10	14°	17 g
RG 10	MTE.22	10	22	14	10,5	12,9	19,050	3900	2 - 14	13°	26 g
RG 12	MTE.26	12	26	16	12	15,4	22,225	5300	6 - 18	13°	41 g
RG 14	MTE.29	14	29	19	13,5	16,8	25,400	6980	6 - 20	16°	56 g
RG 16	MTE.31,5	16	31,5	21	15	19,3	28,575	8780	8 - 22	15°	70 g
RG 16	MTE.32	16	32	21	15	19,3	28,575	8780	8 - 22	15°	75 g
RG 18	MTE.33	18	33	20	16	20,4	28,575	9576	8 - 22	10°	80 g
RG 18	MTE.35	18	35	23	16,5	21,8	31,750	10630	8 - 22	15°	97 g
RG 20	MTE.40	20	40	25	18	24,3	34,925	13020	8 - 25	14°	142 g

LUBRIFICAZIONE:
inserto antifrizione con PTFE, rinforzato,
senza manutenzione.

GIOCO:
accoppiamento precaricato, senza gioco.

MONTAGGIO:
tabella con interferenza e tolleranza di
montaggio disponibile su richiesta.

LUBRICATION:
reinforced PTFE anti-friction liner,
maintenance free.

CLEARANCE:
Preloaded tight fit, no clearance.

MOUNTING:
data-sheet with tolerances and fits for
mounting available on request.

GRAISSAGE:
couche antifrizione avec PTFE, renforcé, sans
entretien.

JEU:
accouplement serré, sans jeu.

APPLICATION:
table avec interference et tolérance de
montage disponible sur demande.