

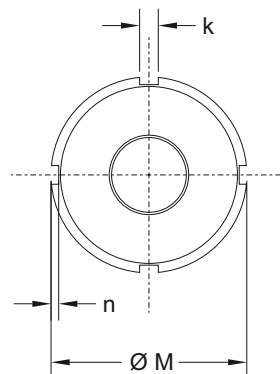
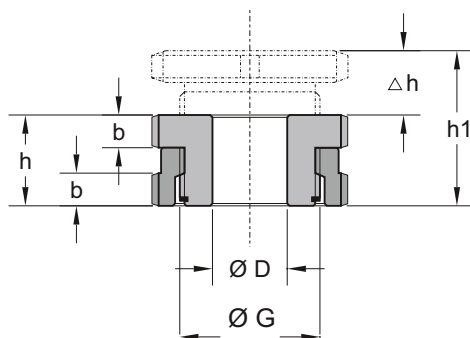
RODOSET

VARIABLE DISTANCE and LEVELLING UNITS

RDUL... acciaio 42 CrMo4, zincato
 RDUL...A1 acciaio inossidabile Aisi 303
 RDUL...A4 acciaio inossidabile Aisi 316

steel 42 CrMo4, zinc-plated
 stainless steel Aisi 303
 stainless steel Aisi 316

acier 42 CrMo4, zingué
 acier inoxydable Aisi 303
 acier inoxydable Aisi 316



CARICO - LOAD - CHARGE

tipo/type	foro	per viti	filett.			base				totale	serraggio/ tightening	carico	
	hole/trou	for screw	thread.	Ø G	Ø M	b	k	n	ammesso/ permitted				vite 8.8
	Ø D	pour vis	h	h1	Δh	Ø G	Ø M	b	k	n	kN	kN	kN
	mm		mm	mm	mm	mm	mm	mm	mm	mm			
RDUL 15-6,6	6,6	M6	15	19	4	M15x1	25	5	4	2	40	9,3	30,7
RDUL 20-6,6	6,6	M6	18	23	5	M20x1	32	6	4	2	65	9,3	55,7
RDUL 20-9	9,0	M8										17,0	48,0
RDUL 20-11	11	M10										27,1	37,9
RDUL 30-11	11	M10	22	29	7	M30x1,5	45	7	5	2	120	27,1	92,9
RDUL 30-13,5	13,5	M12										39,6	80,4
RDUL 30-17,5	17,5	M16										74,5	45,5
RDUL 40-17,5	17,5	M16	28	37	9	M40x1,5	58	8	6	3	210	74,0	136,0
RDUL 40-22	22	M20										120,0	90,0
RDUL 40-26	26	M24										173,0	37,0
RDUL 50-22	22	M20	33	43	10	M50x1,5	70	11	8	3	330	120,0	210,0
RDUL 50-26	26	M24										173,0	157,0
RDUL 50-33	33	M30										277,0	53,0
RDUL 60-26	26	M24	38	50	12	M60x2	80	11	7	3	495	173,0	322,0
RDUL 60-33	33	M30										277,0	218,0
RDUL 60-39	39	M36										394,0	101,0
RDUL 80-39	39	M36	48	62	14	M80x2	105	15	8	4	860	394,0	466,0

Carico aggiuntivo: carico applicabile oltre al carico determinato dal serraggio di una vite 8.8
Additional load: applicable load besides the load determined by the tightening of a 8.8 screw
Charge supplémentaire : charge applicable en plus du poids déterminé par le serrage d'un vis 8.8

valido solo per tipi RDUL.. in acciaio 42 CrMo4
 only valid for type RDUL.. in steel 42 CrMo4
 valide pour les types RDUL.. en acier 42 CrMo4

Esempio sigle:

RDUL 20-9
RDUL 30-13,5 - A1
RDUL 60-39 - A4

Part number initials:

tipo con regolazione M20x1, per viti da M8, acciaio 42 CrMo4, zincato

type with adjustment M30x1,5, for screw M12, Aisi 303 stainless steel

Exemple dénomination :

type avec ajustement M60x2, pour vis M36, acier inoxydable Aisi 306